

- High Density Resistor Simulation
- Up To 18 Channels in a One Slot Module
- Resistance Resolution to 0.125Ω
- Values From 1Ω to 22MΩ
- Accuracy of ±0.2% ± Resolution
- Short and Open Simulation
- Simple Software Control Through Resistance Calls
- VISA & Kernel Drivers Supplied for Windows
- Supported by PXI or LXI Chassis
- 3 Year Warranty

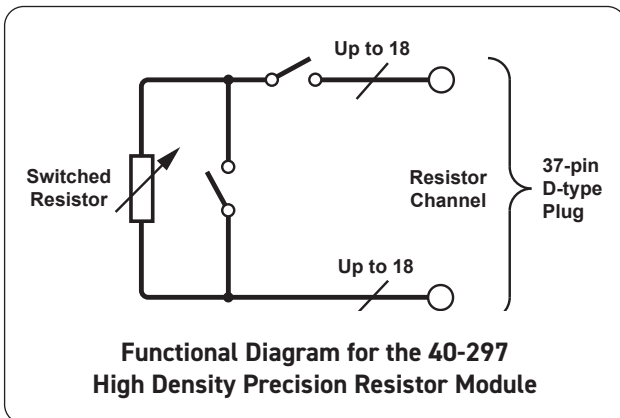


The 40-297 provides a simple solution for applications requiring accurate simulation of resistive sensors. It is available in a variety of resistance ranges and resolutions to meet the needs of functional test systems. It is suitable for engine controller testing where resistive sensors provide information such as temperature.

The 40-297's channels are able to be set as short or open circuit to simulate a wiring or sensor fault.

Software control is simplified by the use of resistor value calls. The module works out the channel setting closest to the requested value and sets that value. The user can interrogate the module to find the actual resistance setting used by the module.

A calibration cable can be attached to the module allowing a DMM to be used to verify each channel. This considerably simplifies the checking of the module's calibration. Verification is performed with the UUT disconnected from the module.



Pickering's Range of PXI Precision Resistor Modules					
Model	Description	Chan.	Range	Resolution	Accuracy
40-260	Precision Programmable Resistor	3	90Ω to 8kΩ	<10mΩ	0.1%
40-261	Precision Programmable Resistor	2	1.5Ω to 2.9kΩ or 10Ω to 36kΩ	<2mΩ or <15mΩ	0.08%
40-262	RTD Simulator	18, 12 or 6	90Ω to 250Ω or 900Ω to 2500Ω	<8mΩ or <90mΩ	0.1%
40-263	RTD Simulator	4, 8, 12, 16, 20 or 24	40Ω to 900Ω, 200Ω to 4.5kΩ or 400Ω to 9kΩ	<10mΩ, <50mΩ or <100mΩ	0.1%
40-265	Strain Gauge Simulator	6, 4 or 2	350Ω, 1kΩ, 1.5kΩ, 2kΩ or 3kΩ	<2mΩ, <10mΩ, <12.5mΩ, <20mΩ or <25mΩ	0.03% or 0.06%
40-297	High Density Precision Resistor	18, 9, 6, 4 or 3	Up to 22.3MΩ	0.125Ω, 0.25Ω, 0.5Ω, 1Ω or 2Ω	0.2%
40-298	High Density Precision Resistor	18, 9, 6, 4 or 3	Up to 22.3MΩ	0.125Ω, 0.25Ω, 0.5Ω, 1Ω or 2Ω	0.2%

Standard Resistor Modules

For applications that do not require the precision or accuracy of our precision range, look to our Standard Resistor range which includes models 40-280/1/2, 40-290/1, 40-292, 40-293, 40-294 and 40-295/6

Custom Resistor Modules

If our range of Resistor Modules does not meet your specific requirements, please contact your local sales office to discuss your application. Customizations include: different start and stop values, current, power, voltage, precision, accuracy, number of channels, connector etc.

The 40-297 is available in 50 standard builds that suit the most common configurations required:

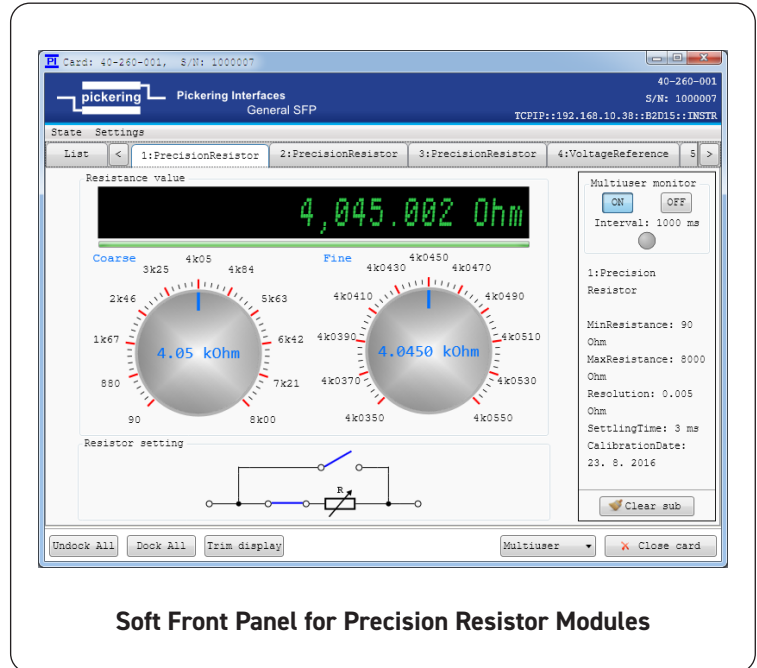
- A narrow resistance range version with 9 or 18 channels.
- A medium resistance range version with 4 or 9 channels.
- A wide resistance range version with 3 or 6 channels.

For applications requiring greater resolution and accuracy, or to support verification with the UUT connected, users should consider the **40-260 series Precision Resistor Modules**.

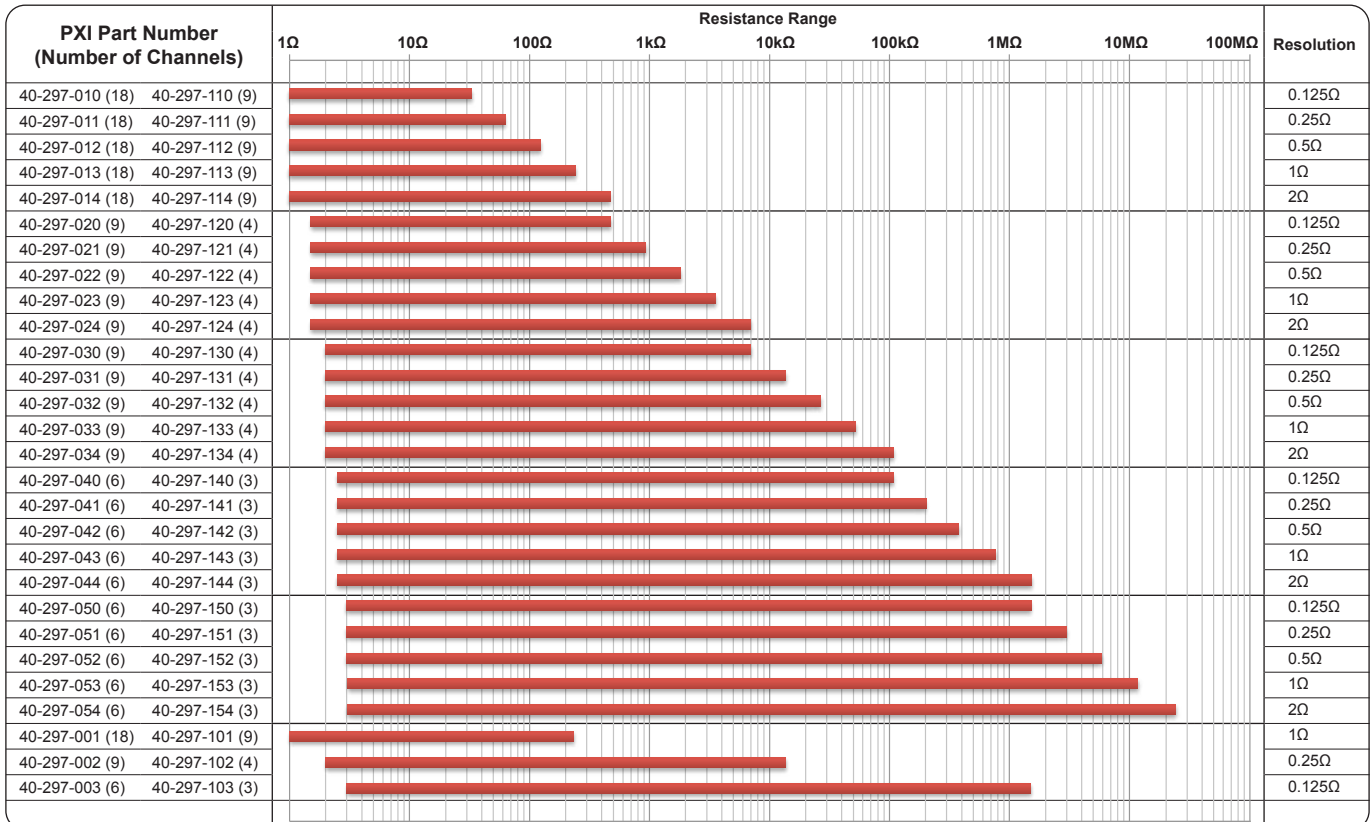
Legacy Support

Due to the new expanded range of builds available within the 40-297 family, the part numbering has been revised. Users are encouraged to order under the new part numbering system where possible. However, to support our existing users the following legacy part numbers are still available:

Resistor Module Description	Legacy Part Number	New Part Number
9 Channel Precision Resistor, 1Ω Resolution	40-297-101	40-297-113
18 Channel Precision Resistor, 1Ω Resolution	40-297-001	40-297-013
4 Channel Precision Resistor, 0.25Ω Resolution	40-297-102	40-297-131
9 Channel Precision Resistor, 0.25Ω Resolution	40-297-002	40-297-031
3 Channel Precision Resistor, 0.125Ω Resolution	40-297-103	40-297-150
6 Channel Precision Resistor, 0.125Ω Resolution	40-297-003	40-297-050



Soft Front Panel for Precision Resistor Modules



Graphical Representation of the 40-297 Precision Resistor Module Range

Specification

Accuracy:	$\pm 0.2\%$ \pm Resolution @ $\pm 10^{\circ}\text{C}$ from calibration temperature (factory calibration @ 21°C)
Fault Simulation:	Open and short circuit (typically $<0.3\Omega$)
Max Power:	0.5W
Max Voltage:	100V* or as limited by power
Settling Time:	$<3\text{ms}$
Software Control:	By resistance calls to module for selected channel.
Calibration:	4-wire resistance measurement of selected channel for verification purposes with UUT removed and a special cable assembly attached. Factory calibration data is stored in the module.
Expected Life (operations):	100 million (10mA)

* For full voltage rating, signal sources must be fully isolated from mains supply and safety earth.

Power Requirements

+3.3V	+5V	+12V	-12V
0	4.3A max	0	0

Mechanical Characteristics

Single slot 3U PXI (CompactPCI card).
3D models for all versions in a variety of popular file formats are available on request.

Connectors

PXI bus via 32-bit P1/J1 backplane connector.
Resistor channel signals via front panel 37-pin male D-Type connector.

Operating/Storage Conditions

Operating Conditions

Operating Temperature: 0°C to $+55^{\circ}\text{C}$
Humidity: Up to 90% non-condensing
Altitude: 5000m

Storage and Transport Conditions

Storage Temperature: -20°C to $+75^{\circ}\text{C}$
Humidity: Up to 90% non-condensing
Altitude: 15000m

PXI & CompactPCI Compliance

The module is compliant with the PXI Specification 2.2. Local Bus, Trigger Bus and Star Trigger are not implemented.

Uses a 33MHz 32-bit backplane interface.

Safety & CE Compliance

All modules are fully CE compliant and meet applicable EU directives: Low-voltage safety EN61010-1:2010, EMC Immunity EN61326-1:2013, Emissions EN55011:2009+A1:2010.

Product Order Codes

0.125Ω Resolution

Range	No. of Channels	Order Code	No. of Channels	Order Code
1Ω to 31.5Ω	9	40-297-110	18	40-297-010
1.5Ω to 472Ω	4	40-297-120	9	40-297-020
2Ω to 6.97kΩ	4	40-297-130	9	40-297-030
2.5Ω to 102kΩ	3	40-297-140	6	40-297-040
3Ω to 1.51MΩ	3	40-297-150	6	40-297-050

0.25Ω Resolution

Range	No. of Channels	Order Code	No. of Channels	Order Code
1Ω to 62.1Ω	9	40-297-111	18	40-297-011
1.5Ω to 925Ω	4	40-297-121	9	40-297-021
2Ω to 13.6kΩ	4	40-297-131	9	40-297-031
2.5Ω to 201kΩ	3	40-297-141	6	40-297-041
3Ω to 2.97MΩ	3	40-297-151	6	40-297-051

0.5Ω Resolution

Range	No. of Channels	Order Code	No. of Channels	Order Code
1Ω to 122Ω	9	40-297-112	18	40-297-012
1.5Ω to 1.81kΩ	4	40-297-122	9	40-297-022
2Ω to 26.7kΩ	4	40-297-132	9	40-297-032
2.5Ω to 395kΩ	3	40-297-142	6	40-297-042
3Ω to 5.82MΩ	3	40-297-152	6	40-297-052

1Ω Resolution

Range	No. of Channels	Order Code	No. of Channels	Order Code
1Ω to 239Ω	9	40-297-113	18	40-297-013
1.5Ω to 3.55kΩ	4	40-297-123	9	40-297-023
2Ω to 52.4kΩ	4	40-297-133	9	40-297-033
2.5Ω to 773kΩ	3	40-297-143	6	40-297-043
3Ω to 11.4MΩ	3	40-297-153	6	40-297-053

2Ω Resolution

Range	No. of Channels	Order Code	No. of Channels	Order Code
1Ω to 470Ω	9	40-297-114	18	40-297-014
1.5Ω to 6.97kΩ	4	40-297-124	9	40-297-024
2Ω to 102kΩ	4	40-297-134	9	40-297-034
2.5Ω to 1.51MΩ	3	40-297-144	6	40-297-044
3Ω to 22.3MΩ	3	40-297-154	6	40-297-054

Accessories:

Calibration lead for 4-wire resistance measurement using DMM - 37-pin D-type socket to shrouded 4mm bayonet plugs,

1 meter length: 40-975-037-1m

Mating Connectors & Cabling

For connection accessories for the 40-297 series please refer to the [90-007D](#) 37-pin D-Type Connector Accessories data sheet where a complete list and documentation can be found for accessories, or refer to the Connection Solutions catalog.

Other Resistor Modules

Pickering Interfaces manufacture a range of variable resistor modules in the PXI format. If you have a requirement for a variable resistor module please contact your local sales office with the information below and we will advise you on the best solution for your application.

Lowest Resistance †	<input type="text"/>
Highest Resistance	<input type="text"/>
Resistance Resolution	<input type="text"/>
Overall Accuracy	<input type="text"/>
Maximum Power/Current	<input type="text"/>
Number of Channels (variable resistors)	<input type="text"/>

† Resistance is as measured across the user connector terminals, minimum resistance must have a non-zero value.

Product Customization

Pickering PXI modules are designed and manufactured on our own flexible manufacturing lines, giving complete product control and enabling simple customization to meet very specific requirements.

Customization can include:

- Alternative resistance range
- Alternative resolution
- Different number of channels
- Different performance specifications

All customized products are given a unique part number, fully documented and may be ordered at any time in the future. Please contact your local sales office to discuss.

Chassis Compatibility

This PXI module must be used in a suitable chassis. It is compatible with the following chassis types:

- All chassis conforming to the 3U PXI and 3U Compact PCI (cPCI) specification
- Legacy and Hybrid Peripheral slots in a 3U PXI Express (PXIe) chassis
- Pickering Interfaces LXI or LXI/USB Modular Chassis

Chassis Selection Guide

Standard PXI or hybrid PXIe Chassis from any Vendor:

- Mix our 1000+ PXI switching & simulation modules with any vendor's PXI instrumentation
- Embedded or remote Windows PC control
- Real-time Operating System Support
- High data bandwidths, especially with PXI Express
- Integrated module timing and synchronization

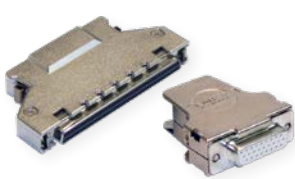
Pickering LXI or LXI/USB Modular Chassis—only accept our 1000+ PXI Switching & Simulation Modules:

- Ethernet or USB control enables remote operation
- Low-cost control from practically any controller
- LXI provides manual control via Web browsers
- Driverless software support
- Power sequencing immunity
- Ethernet provides chassis/controller voltage isolation
- Independence from Windows operating system



Connectivity Solutions

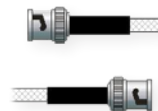
We provide a full range of supporting cable and connector solutions for all our switching products—20 connector families with 1200+ products. We offer everything from simple mating connectors to complex cables assemblies and terminal blocks. All assemblies are manufactured by Pickering and are guaranteed to mechanically and electrically mate to our modules.



Connectors & Backshells



Multiwire Cable Assemblies



RF Cable Assemblies



Connector Blocks

We also offer customized cabling and have a free online **Cable Design Tool** that can be used to create custom cable solutions for many applications.

Visit: pickeringtest.com/cdt to start your design.

Mass Interconnect

We recommend the use of a mass interconnect solution when an Interchangeable Test Adapter (ITA) is required for a PXI or LXI based test system. Our modules are fully supported by both Virginia Panel and MacPanel.

Pickering Reed Relays

We are the only switch provider with in-house reed relay manufacturing capability via our sister company, Pickering Electronics. These instrument grade reed relays feature **SoftCenter®** technology, ensuring long service life and repeatable contact performance.

To learn more, please go to: pickeringrelay.com



Programming

Pickering provide kernel, IVI and VISA (NI & Keysight) drivers which are compatible with all Microsoft supported versions of Windows and popular older versions. For a list of all supporting operating systems, please see: pickeringtest.com/os

The VISA driver is also compatible with Real-Time Operating Systems such as LabVIEW RT. For other RTOS support contact Pickering. These drivers may be used with a variety of programming environments and applications including:

- **Pickering Interfaces Switch Path Manager**
- **National Instruments** products (LabVIEW, LabWindows/CVI, Switch Executive, MAX, TestStand, VeriStand, etc.)
- **Microsoft Visual Studio** products (Visual Basic, Visual C+)
- **Keysight** VEE and OpenTAP
- **Mathworks** Matlab
- **Marvin** ATEasy
- **MTQ Testsolutions** Tecap Test & Measurement Suite

Drivers for popular Linux distributions are available, other environments are also supported, please contact Pickering with specific enquiries. We provide Soft Front Panels (SFPs) for our products for familiarity and manual control, as well as comprehensive documentation and example programs to help you develop test routines with ease.

To learn more about software drivers and development environments, please go to:

pickeringtest.com/software

Signal Routing Software

Our signal routing software, Switch Path Manager, automatically selects and energizes switch paths through Pickering switching systems. Signal routing is performed by simply defining test system endpoints to be connected together, greatly accelerating Test System software development. To learn more, please go to: pickeringtest.com/spm



Diagnostic Relay Test Tools

eBIRST Switching System Test Tools are designed specifically for our PXI, PCI or LXI products, these tools simplify switching system fault-finding by quickly testing the system and graphically identifying the faulty relay.

To learn more, please go to: pickeringtest.com/ebirst

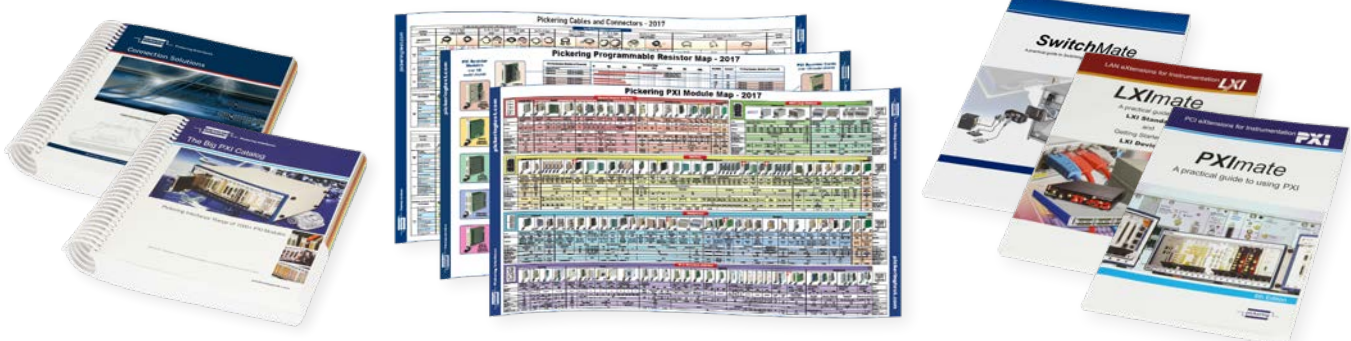


Three Year Warranty & Guaranteed Long-Term Support

All standard products manufactured by Pickering Interfaces are warranted against defective materials and workmanship for a period of three years from the date of delivery to the original purchaser. Extended warranty and service agreements are available for all our modules and systems with various levels to suit your requirements. Although we offer a 3-year warranty as standard, we also include guaranteed long-term support—with a history of supporting our products for typically 15-20 years. To learn more, please go to: pickeringtest.com/support

Available Product Resources

We have a large library of product resources including success stories, product and support videos, articles, as well as complete product catalogs and product reference maps to assist when looking for the switching, simulation and cable and connector solutions you need. We have also published handy reference books on Switching Technology and for the PXI and LXI standards.



To view, download or request any of our product resources, please visit: pickeringtest.com/resources